



Makes your life simpler.



INNGENSO
Innovative Genuine Solutions

Home thermostats | Custom solutions
Convactor controllers | Infrared panel controllers

Development and production of custom electronic controllers.

Experience a new level of simplicity and control with our latest thermostat edition.



Save money

Reduce energy consumption up to 15%.



Weekly schedule

Set your hourly comfort temperature for each day of the week.



Simple design

Adjust your heating system easily with our easy-to-use design.



Frost protection

Protect your heating system from damage at cold temperatures.



Quick connection

Connect easily to 95% of all heating systems.



Window open detection

Increase saving by avoiding unnecessary heating.



Remote control

Monitor and manage your heating system with our mobile app.



Holiday mode

Set holiday mode in advance and enjoy your vacation.





Thermostat

Power supply	3 V DC, 2 AA batteries
Mounting	Wall or portable
Schedule	7 days
Manual control	Full
Frost protection	Yes
Sensitivity	0.5 °C
Hysteresis setting	0.2 °C – 5 °C
Temperature setting	5 °C – 35 °C
Temperature measurement	5 °C – 40 °C
Temperature sensor calibration	-5 °C – 5 °C
Dimensions	86x86x29 mm



Receiver

Power supply	230 V AC
Switching power	2000 W
Output/input	NO, NC, COM, L, N
Frequency	868 MHz
Dimensions	120 x 90 x 25 mm





Thermostat

Power supply	3 V DC, 2 AA batteries
Mounting	Wall or portable
RF Communication	*CS, FEC
Manual control	Full
Frost protection	Yes
Window open detection	Yes
Sensitivity	0.5 °C
Temperature setting	7 °C – 35 °C
Temperature measurement	5 °C – 40 °C
Dimensions	86x86x29 mm

Mobile App

Holiday mode	Yes
Weekly mode	Yes
Multiple thermostat control	Yes
Hysteresis setting	0.2 °C – 5 °C
Temperature sensor calibration	-5 °C – 5 °C
Platform	Android 5.0 / iOS 5 or higher
Download and update	Free

Receiver

Power supply	230 V AC
Switching power	2000 W
Output/Input	NO, NC, COM, L, N
Frequency	868MHz and 2.4 GHz
Dimensions	120 x 90 x 25 mm
WiFi	2.4 GHz
Data encryption	TLS (SSL)
Standalone control	Yes
Ingress protection rating	IP20
Operating temperature	0 °C – 70 °C

*Checksum, Forward error correction





Control hub

Power supply	5V USB
Mounting	Table mount
Manual control	Yes
Frost protection	Yes
Window open detection	Yes
Sensitivity	0.5 °C
Temperature setting	7 °C – 35 °C
Temperature measurement	5 °C – 40 °C
Dimensions	Ø 100 mm

Mobile App

Manual mode	Yes
Weekly mode	Yes
Multiple thermostat control	Yes
Hysteresis setting	0.2 °C – 5 °C
Temperature sensor calibration	-5 °C – 5 °C
Platform	Android 5.0 / iOS 5 or higher
Download and update	Free
Multiple pellet boiler models compatible	Yes
Read information	Status, alarm
Control status	Power level, water temperature

Receiver

Power supply	230 V AC
Switching power	1000 W
Output/Input	NO, NC, COM, L, N
Communication	Serial (MODBUS)
Frequency	868MHz and 2.4 GHz
Dimensions	120 x 90 x 25 mm
WiFi	2.4 GHz
Data encryption	TLS (SSL)
Standalone control	Yes
Ingress protection rating	IP20
Operating temperature	0 °C – 70 °C

*Checksum, Forward error correction





Thermostat

Power supply	3 V DC, 2 AA batteries
Mounting	Wall or portable
RF Communication	*CS, FEC
Manual control	Full
Frost protection	Yes
Window open detection	Yes
Sensitivity	0.5 °C
Temperature setting	5 °C – 35 °C
Temperature measurement	5 °C – 40 °C
Dimensions	86x86x29 mm

Mobile App

Weekly mode	Yes
Hysteresis setting	0.2 °C – 5 °C
Temperature sensor calibration	-5 °C – 5 °C
Platform	Android 5.0 / iOS 5 or higher
Download and update	Free

Receiver

Power supply	24 V DC
Switching power	2000 W
Output/Input	NO, COM, 24 V DC, GND
Frequency	868MHz and 2.4 GHz
Dimensions	120 x 90 x 25 mm
WiFi	2.4 GHz
Data encryption	TLS (SSL)
Standalone control	Yes
Ingress protection rating	IP20
Operating temperature	0 °C – 70 °C

*Checksum, Forward error correction

Wireless Digital WiFi Thermostat IT IR-WiFi





Thermostat

Power supply	3 V DC, 2 AA batteries
Mounting	Wall or portable
RF Communication	*CS, FEC
Manual control	Full
Frost protection	Yes
Window open detection	Yes
Sensitivity	0.5 °C
Temperature setting	7 °C – 35 °C
Temperature measurement	5 °C – 40 °C
Dimensions	86x86x29 mm
Ingress protection rating	IP20

Mobile App

Holiday mode	Yes
Weekly mode	Yes
Multiple thermostat control	Yes
Hysteresis setting	0.2 °C – 5 °C
Temperature sensor calibration	-5 °C – 5 °C
Platform	Android 5.0 / iOS 5 or higher
Download and update	Free

Receiver

Power supply	230 V AC
Switching power	2000 W
Output/Input	Lin, N, PE, Lout, N, PE
Frequency	868MHz and 2.4 GHz
Dimensions	120 x 90 x 25 mm
WiFi	2.4 GHz
Data encryption	TLS (SSL)
Maximum number of receivers	6
Ingress protection rating	IP20
Operating temperature	0 °C – 70 °C

*Checksum, Forward error correction





Thermostat

Power supply	3 V DC, 2 AA batteries
Mounting	Wall or portable
RF Communication	*CS, FEC
Manual control	Full
Frost protection	Yes
Window open detection	Yes
Sensitivity	0.5 °C
Temperature setting	7 °C – 35 °C
Temperature measurement	5 °C – 40 °C
Dimensions	86x86x29 mm
Maximum number of thermostats	6

Mobile App

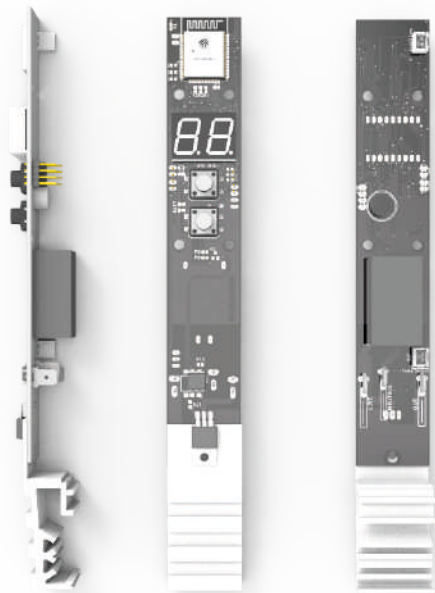
Holiday mode	Yes
Summer mode	Yes
Weekly mode	Yes
Hysteresis setting	0.2 °C – 5 °C
Temperature sensor calibration	-5 °C – 5 °C
Multiple thermostat control	Yes
Platform	Android 5.0 / iOS 5 or higher
Download and update	Free

Receiver

Power supply	230 V AC
Maximum switching power for pump outputs	1000 W
Maximum switching power for valve outputs	1A @ 230V
Maximum number of valve outputs	6
Number of water pump outputs	1
Number of general pump outputs	1
Frequency	868 MHz and 2.4 GHz
Dimensions	207x121x35 mm
WiFi	2.4 GHz
Data encryption	TLS (SSL)
Ingress protection rating	IP20
Operating temperature	0 °C – 70 °C

*Checksum, Forward error correction

Digital WiFi Controller TH-C100

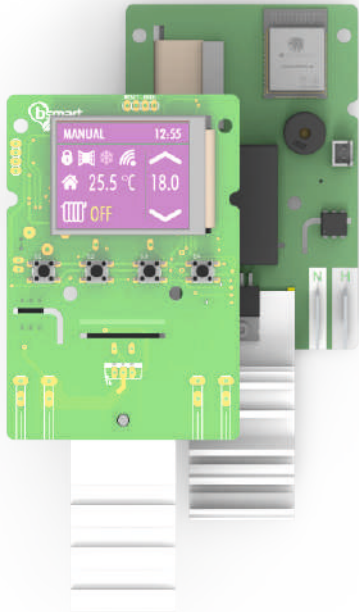


Controller

Power supply	100V–260V AC, 50–60Hz
Power consumption in off mode	< 0.5W
Dimensions	230x30x29.5 mm
WiFi	2.4 GHz
Data encryption	TLS (SSL)
Room temperature sensor	0 °C – 80 °C
Triac temperature sensor	0 °C – 150 °C
7-segment display	2-digit, 2-dot
Number of control tactile buttons	2
Window open detection	Yes
Manual control	Full
Temporary manual mode	Yes
Frost protection	Yes
Temperature setting	5 °C – 35 °C
Overheat protection	Yes

Mobile App

Weekly mode	Yes
Hysteresis setting	0.5 °C
Temperature sensor calibration	-10 °C – 10 °C
Platform	Android 5.0 / iOS 5 or higher
Download and update	Free



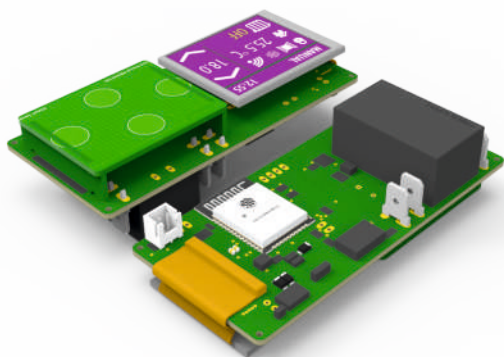
Controller

Power supply	220V–240V AC, 50–60Hz
Power consumption in off mode	< 0.5W
Dimensions	98x67x29 mm
WiFi	2.4 GHz
Data encryption	TLS (SSL)
Room temperature sensor	0 °C – 40 °C
Triac temperature sensor	–15 °C – 70 °C
TFT display	1.77" Color
Number of control tactile buttons	4
Window open detection	Yes
Manual control	Full
Frost protection	Yes
Temperature setting	7 °C – 28 °C
Weekly program	Yes
Overheat protection	Yes

Mobile App

Weekly mode	Yes
Hysteresis setting	0.2 °C – 5 °C
Temperature sensor calibration	–5 °C – 5 °C
Platform	Android 5.0 / iOS 5 or higher
Download and update	Free

Digital WiFi Controller TE-C100



Controller

Power supply	100V–260V AC, 50–60Hz
Power consumption in off mode	< 0.5W
Dimensions	46x96x27 mm
WiFi	2.4 GHz
Data encryption	TLS (SSL)
Room temperature sensor	0 °C – 80 °C
TFT display	1.77" Color
Number of control capacitive touch buttons	4
Window open detection	Yes
Manual control	Full
Frost protection	Yes
Temperature setting	10 °C – 30 °C
Weekly program	Yes
Overheat protection	Yes
Real-time clock	Yes
Tilt sensor	Yes

Mobile App

Weekly mode	Yes
Hysteresis setting	0.2 °C – 5 °C
Temperature sensor calibration	–4 °C – 4 °C
Platform	Android 5.0 / iOS 5 or higher
Download and update	Free



 /inngenso.thermostat
 @inngenso.thermostat
 info@innentech.ch
 www.innentech.ch

Innentech GmbH
Gubelstrasse 19
6300 Zug
Switzerland